

SUMMARY OF BRIDGE QUANTITIES JOB 2616

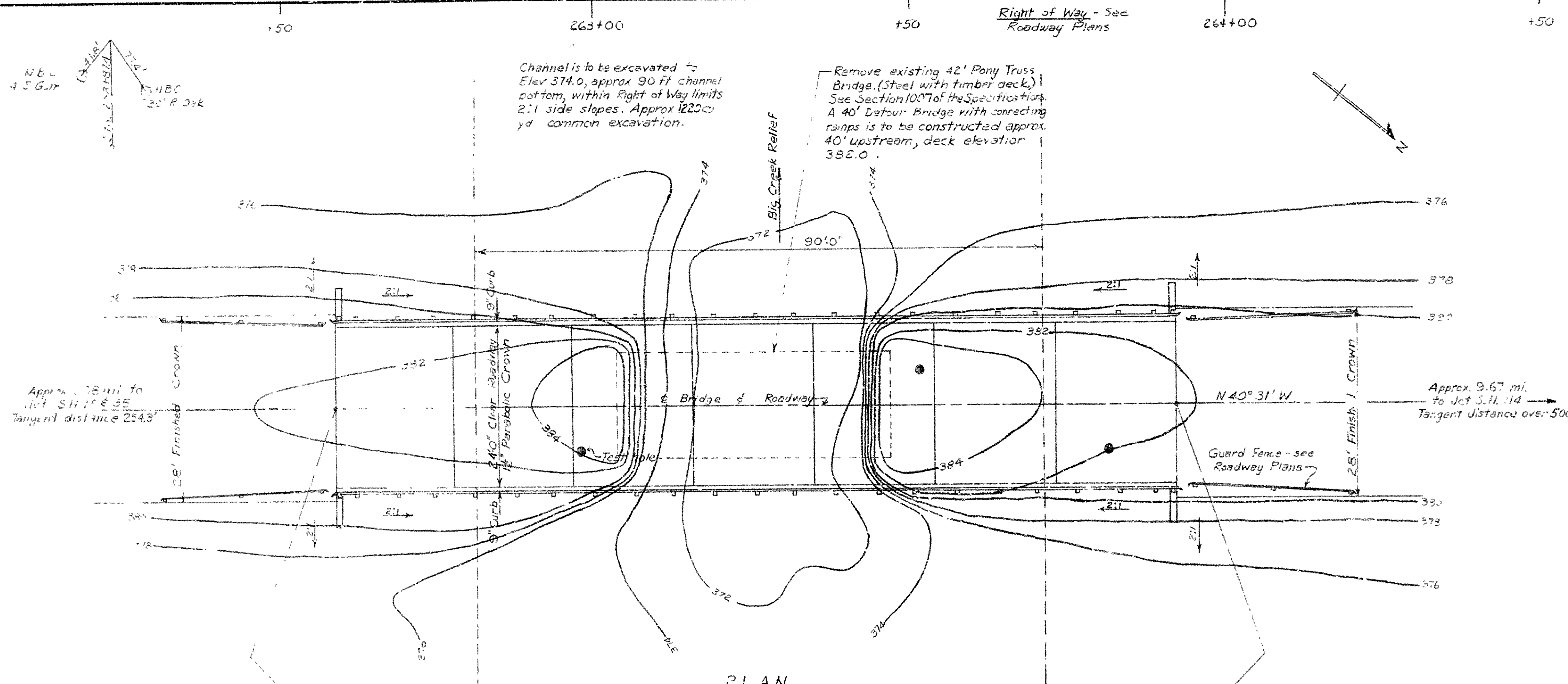
NAME PLATE TITLE	BRIDGE No.	CODE No.	ITEM No		802	802	802	803	SP & 804	SP 805-7	812	1007
			ITEM	COMMON EXCAVATION FOR STRUCTURES	CLASS 5 CONCRETE	PRECAST SLAB CURB UNITS 19'	PRECAST SLAB INTERIOR UNITS 19'	REINFORCING STEEL	PRECAST CONCRETE PILING (6" OCTAGONAL)	STEEL (11GA) OR ALUMINUM (.125") PLATE GUARD BRIDGE RAILING	BRIDGE NAME PLATES (TYPE C)	REMOVAL OF EXISTING BRIDGE STRUCTURES & MAINTENANCE OF TRAFFIC
BIG CREEK	3415	X020	END BENTS 1 & 7	42	13.63	-	-	1895	150	-	1	
			BENTS 2,3,5 & 6	0	22.67	-	-	3445	467	-	-	
			BENT 4	0	5.75	-	-	850	126	-	-	
			SPANS 1-6	-	-	12	30	-	-	234	-	
			TOTALS FOR BRIDGE 3415	42	42.00	12	30	6190	743	234	1	20.0 %
BIG CREEK RELIEF	3416	X020	END BENTS 1 & 8	42	13.94	-	-	1904	150	-	1	
			BENTS 2,4,5 & 7	0	22.16	-	-	3320	430	-	-	
			BENTS 3 & 6	0	11.30	-	-	1636	210	-	-	
			SPANS 1-7	-	-	14	35	-	-	271	-	
			TOTALS FOR BRIDGE 3416	42	47.40	14	35	6860	790	271	1	12.5 %
BIG CREEK RELIEF	3417	X020	END BENTS 1 & 7	42	13.94	-	-	1904	150	-	1	
			BENTS 2,3,5 & 6	0	22.16	-	-	3320	425	-	-	
			BENT 4	0	5.65	-	-	816	105	-	-	
			SPANS 1-6	-	-	12	30	-	-	233	-	
			TOTALS FOR BRIDGE 3417	42	41.75	12	30	6040	680	233	1	15.5 %
TOTALS FOR JOB 2616				126	131.15	38	95	19,090	2213	738	3	48.0 % *

* Remaining 52 % is Roadway Item.

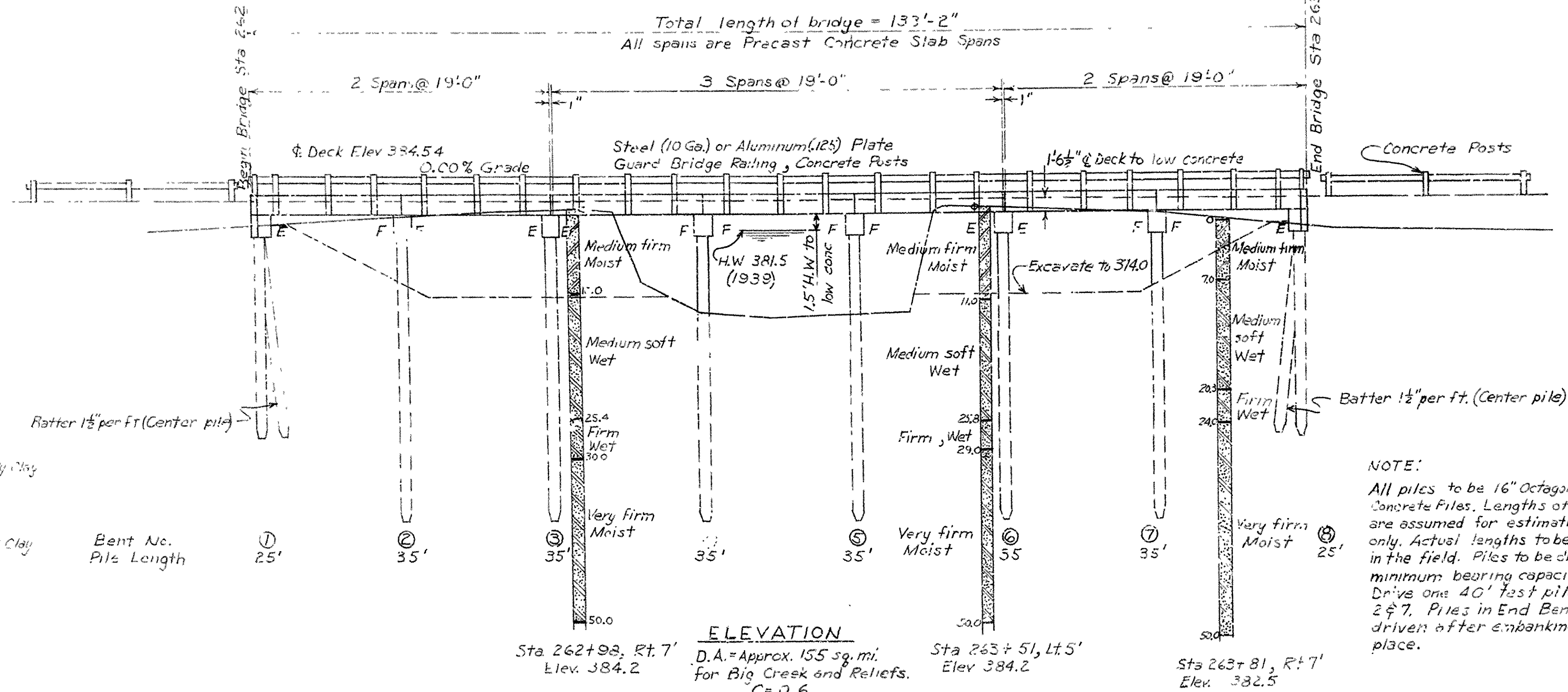
SUMMARY OF BRIDGE QUANTITIES
PANSY - NORTHWEST
CLEVELAND COUNTY
ROUTE 35 SEC. 5
ARKANSAS STATE HIGHWAY COMMISSION
LITTLE ROCK, ARK.
DRAWN BY FMH DATE 10-17-60
TRACED BY JEM DATE 10-19-60
CHECKED BY JEM DATE 10-19-60
BRIDGE NO. 3415-3417 DRAWING NO. 11178

F.P. Carlson
BRIDGE DESIGN ENGINEER

FED. ROAD NO.	STATE	FED. AID PROJECT YEAR	FISCAL YEAR	SHEET NO.	TOTAL SHEETS
6	ARK.	5-242(2)		26	28
JOB No.	2616				



GENERAL NOTES
 B.M. - Top bolt on Bridge curb, 2' S. of E. corner, Sta 254+80. Elevation 383.77
 For details of Superstructure see Day 2-2-A
 For details of Substructure see Day 2-2-B
 For details of Precast Concrete Piles see Day 2-2-C
 Stresses: Class 5 Concrete 15,000 p.s.i.
 Reinforcing Steel 20,000 p.s.i.
 Cold Drawn Wire Mesh 60,000 p.s.i.
 Loading: H15 ASDH 1.15
 Specifications: Arkansas State Highway Commission "Standard Specifications for Highway Construction", Edition 1960

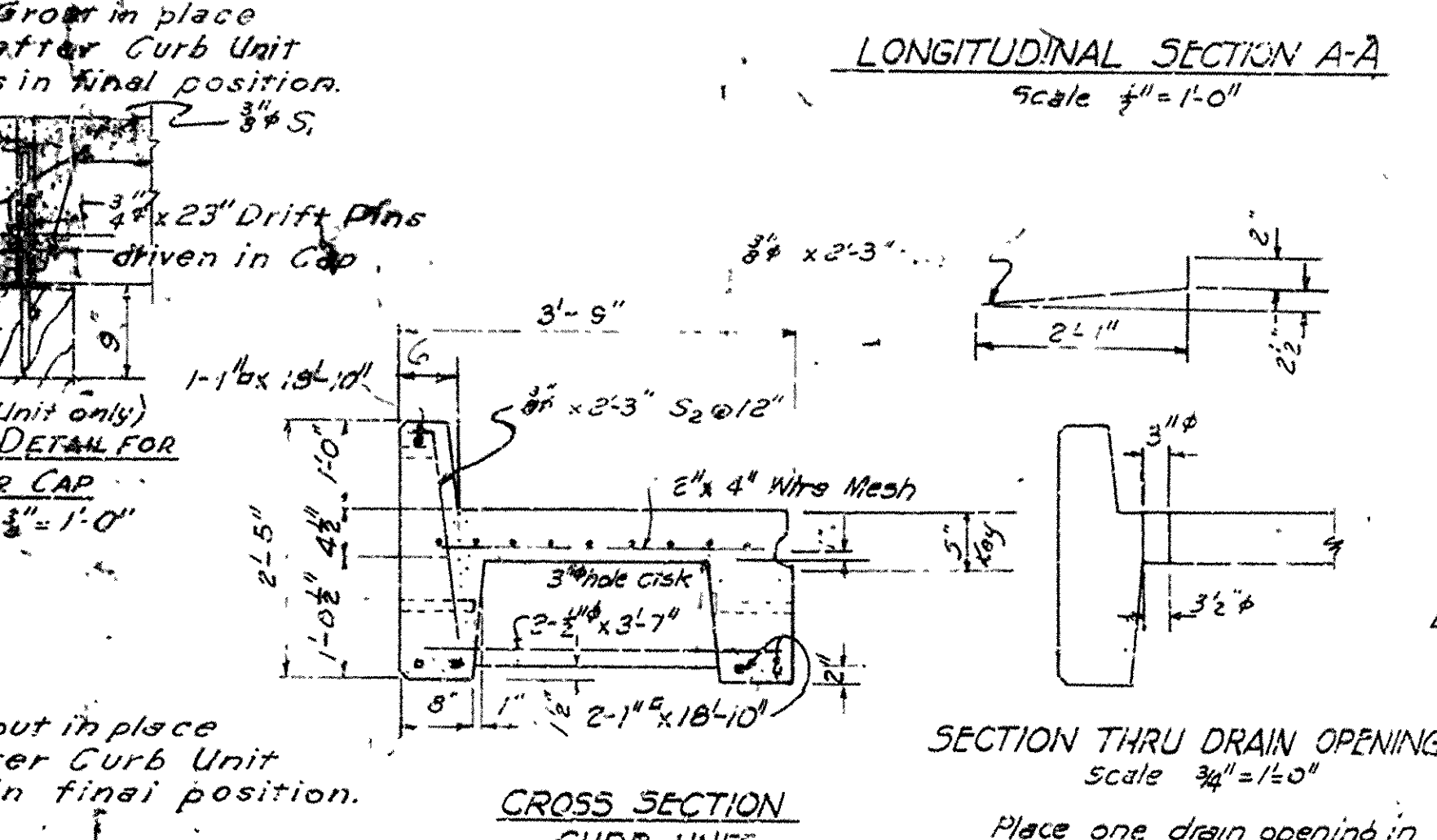
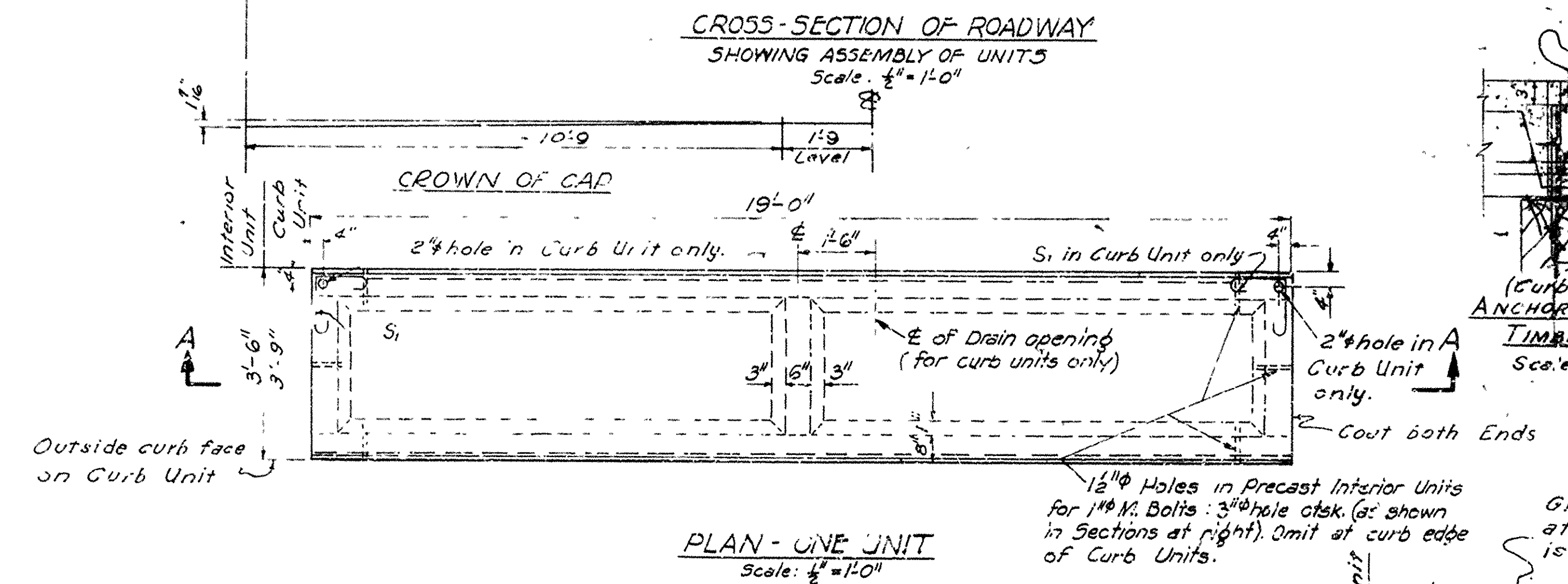
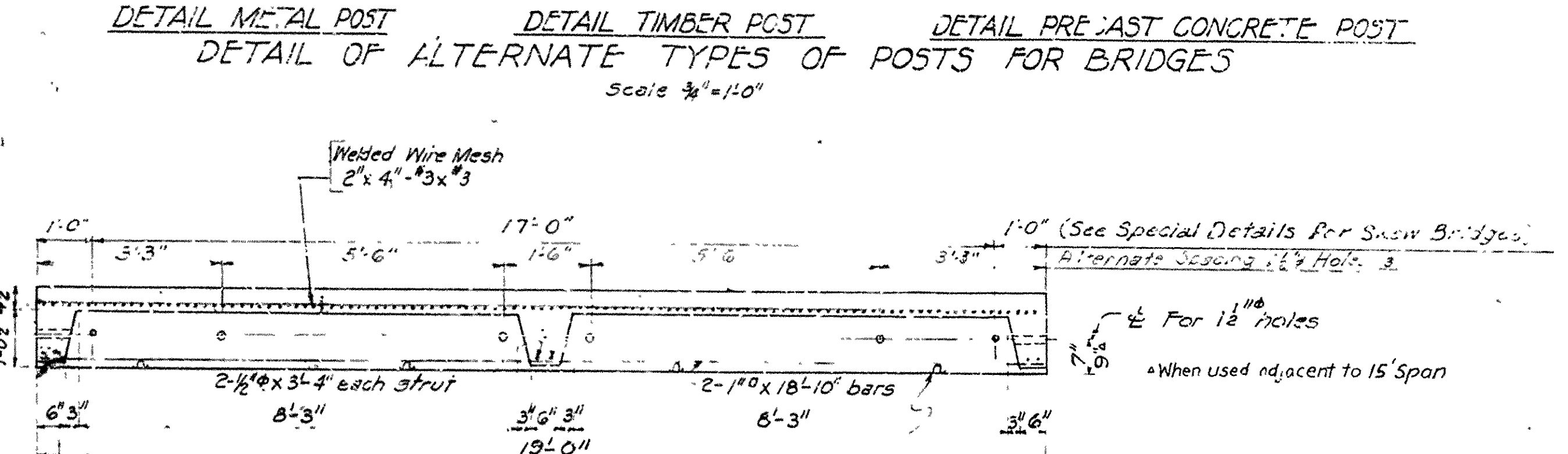
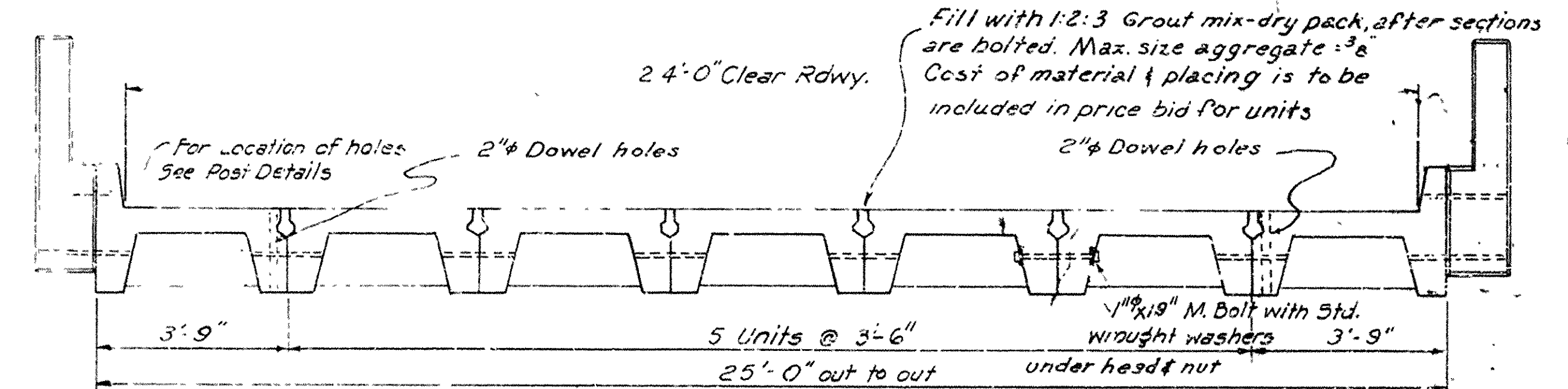
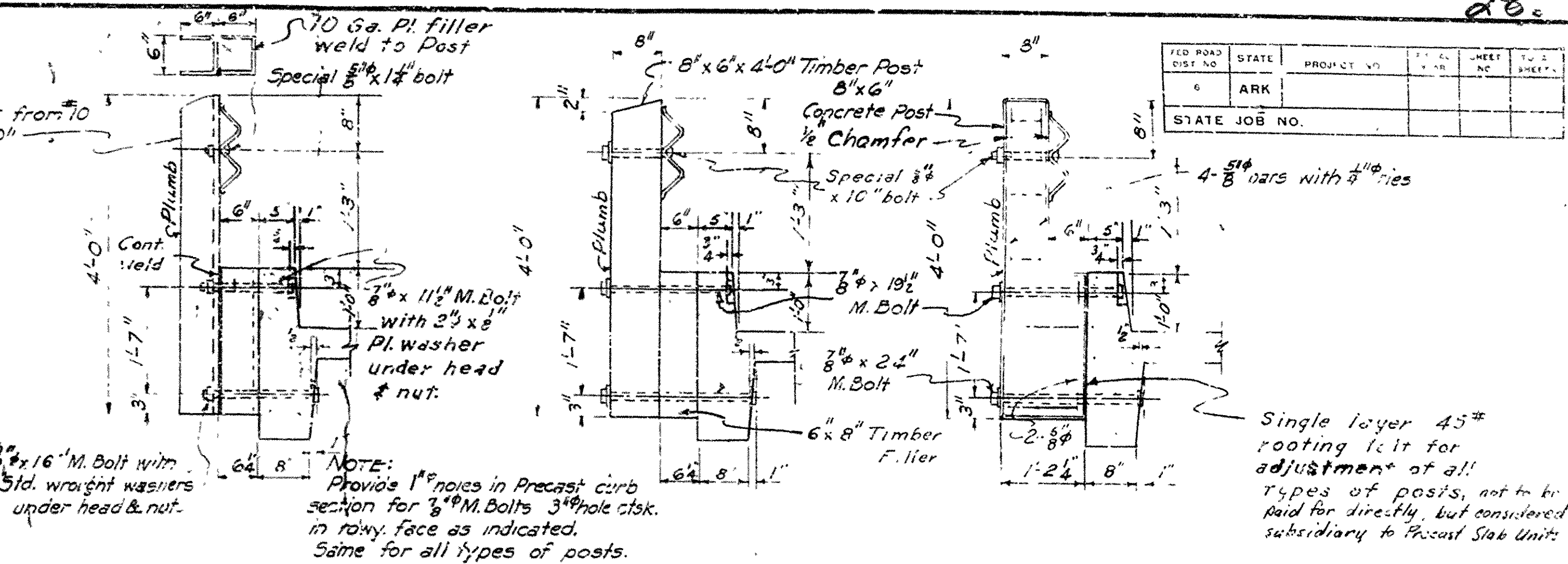
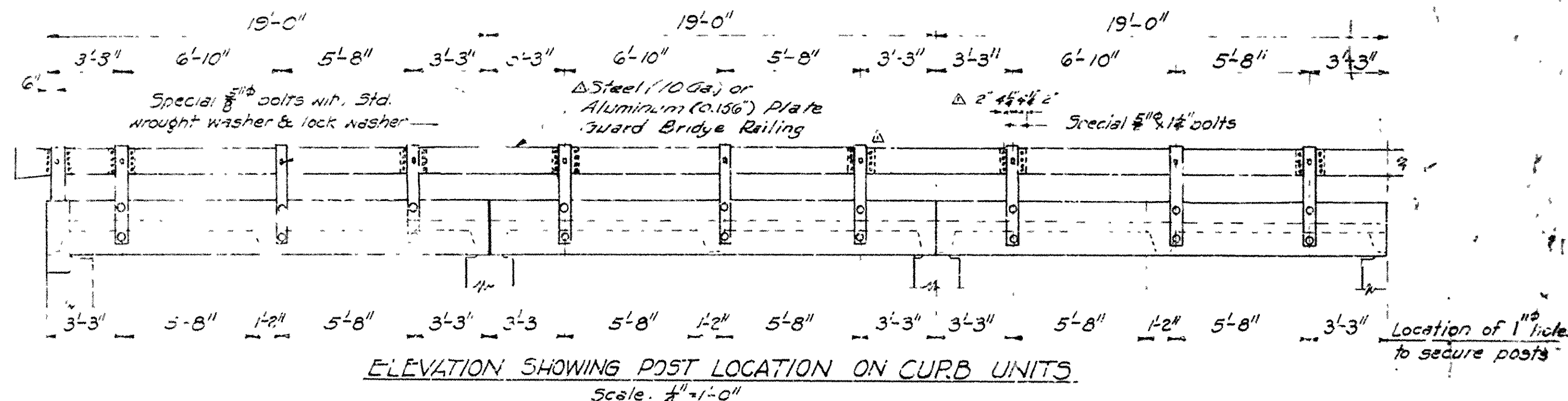


NOTE:
 All piles to be 16" Octagonal Precast Concrete Piles. Lengths of piles shown are assumed for estimating purposes only. Actual lengths to be determined in the field. Piles to be driven to a minimum bearing capacity of 32 tons. Drive one 40' test pile at Bents 2 & 7. Piles in End Bents to be driven after embankment is in place.

**LAYOUT OF
 BRIDGE OVER BIG CREEK REL'EF
 PANSY - NORTHWEST
 CLEVELAND COUNTY
 ROUTE 35 SEC. 5
 ARKANSAS STATE HIGHWAY COMMISSION
 LITTLE ROCK, ARK.**
 DRAWN BY: F.M.H. DATE 10-5-60
 TRACED BY: J.S. DATE 10-5-60
 CHECKED BY: J.S. DATE 10-5-60
 BRIDGE NO. 3416 DRAWING NO. 11180

L.P. Pearson
 BRIDGE DESIGN ENGINEER

STATE	PROJECT NO.	SHEET NO.	TOTAL SHEETS
ARK			
STATE JOB NO.			



NOTES

All concrete to be Class "5". All exposed corners to be chamfered 1/4" unless noted. All other corners rounded to 1/4" radius. Reinforcing dimensions are to 1/2" of bars.

All reinforcing steel shall be accurately located in the forms and firmly held in place by means of steel wire supports. The wire supports will not be paid for directly but will be considered subsidiary to the item of Reinforcing Steel.

Wire mesh shall conform to the Specification for Welded Steel Wire Fabric for Concrete Reinforcement of the A.A.S.H.O. Specifications for Highway Materials, Designation M 55-37, (A.S.T.M. Designation A 185-37).

All machine bolts connecting rail posts to curb sections and special bolts shall be considered as subsidiary to the item of "Steel or Aluminum Plate Guard Bridge Railing."

Paint heads and nuts with aluminum paint after assembly is complete.

Specifications: - Arkansas Highway Commission Standard Specifications for Highway Construction, Edition of 1959.

Reinforcing steel shall be deformed bars, 2" infer or hard grade. Bolts connecting units will not be paid for directly but will be considered subsidiary to the bid price per slab unit.

A deviation of more than 1/8" in dimension or line will be cause for rejection of the unit.

SEE LAYOUT FOR SPECIAL DETAILS.

H-15 Loading

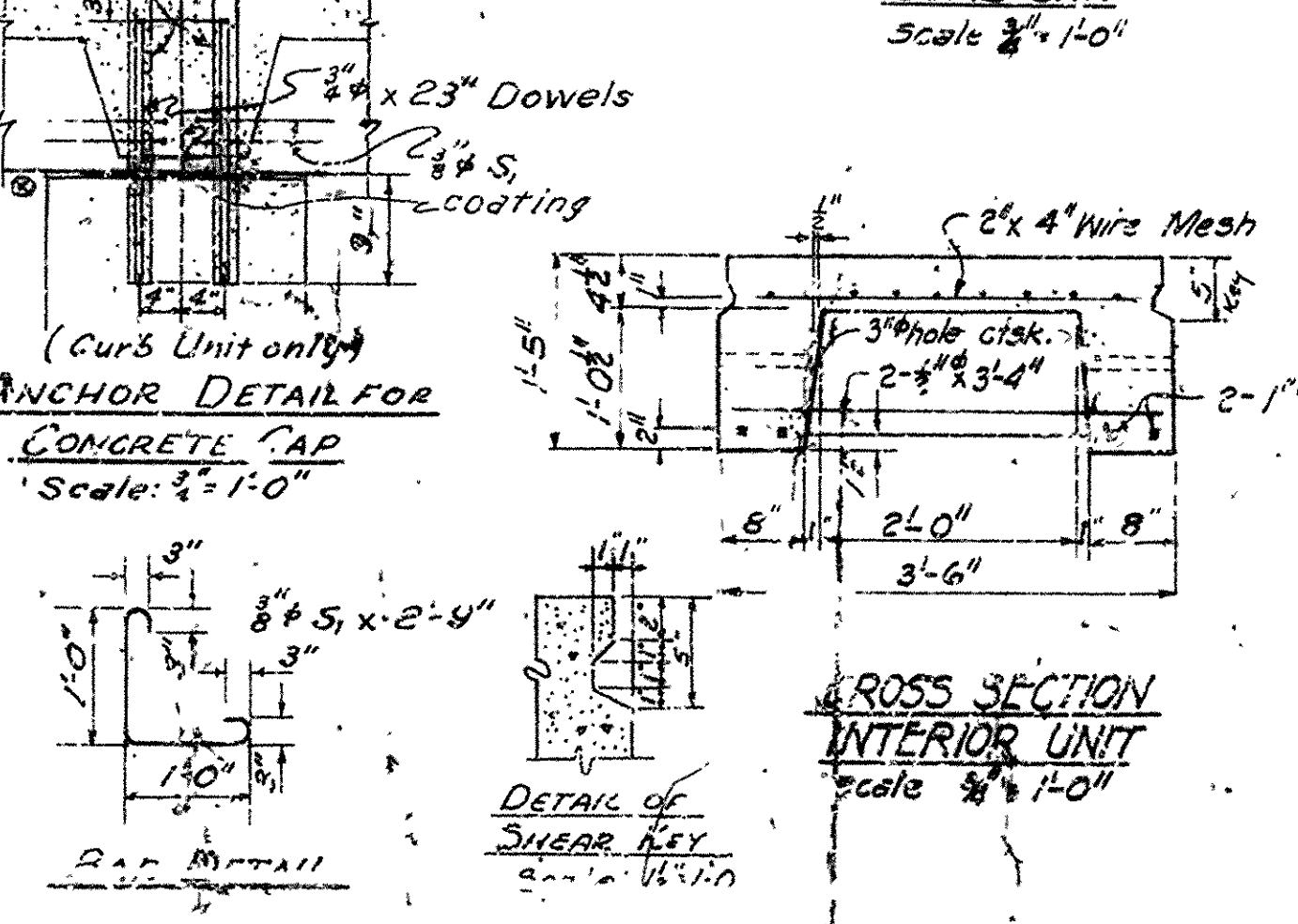
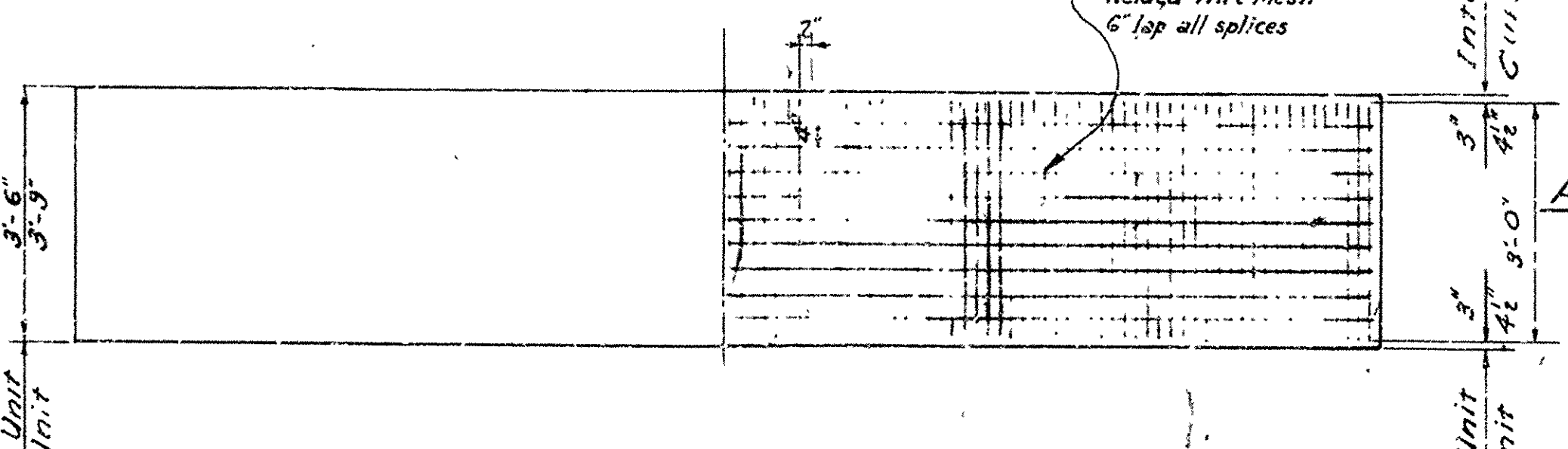
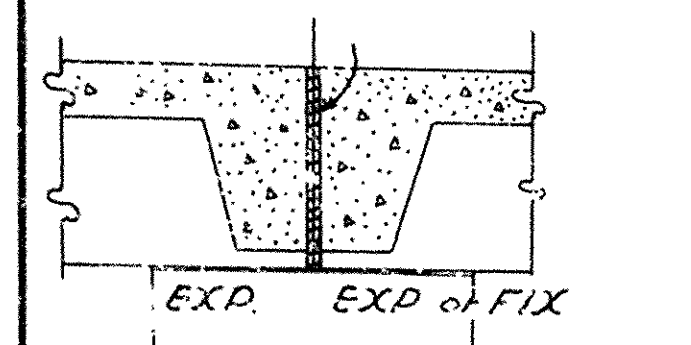
Stresses

Class "5" Concrete (n=10) 1200 #/sq ft

Reinforcing Steel 20,000 #/sq ft

Cold Drawn Wire Mesh 30,000 #/sq ft

1/4" Sponge Rubber compressed to and sealed with asphalt joint filler; not to be paid for directly but considered as subsidiary to Precast Slab Units.



Coating to be applied between ends of adjacent units shall consist of an asphaltic paint with asbestos fibers which will produce a filler on each surface of 1/4".

The coating shall adhere and set firm to the vertical surfaces of the concrete. The softening point shall be not less than 140°F.

Revised: Wire Mesh 3-1-61 A.F.

Revised: 1 1/2" bolt hole in end of unit. FMH 6-4-67

Revised: Exp. Jt. 3-17-58 V.P.

Revised: F.R.B. 1-20-53

" : Bar S₂ 8-G-53

" : Asphalt Coating 10-7-53

" : Bolt Holes 10-7-53

" : Note for Special Details 4-27-54

" : Carb Thickness & Shear Key 11-16-61 H.B.

" : Curb height for 15' span 11-16-61 H.B.

Bid items for Precast Slab Units are:

- "Precast Slab Curb Unit"
- "Precast Slab Interior Unit"

DETAILS OF STANDARD PRECAST SLAB BRIDGE

19'-0" SPAN

24'-0" CLEAR ROADWAY

ROUTE SEC.

ARKANSAS STATE HIGHWAY COMMISSION

LITTLE ROCK, ARK.

Traced By: _____ Date: _____

Checked By: _____ Date: _____

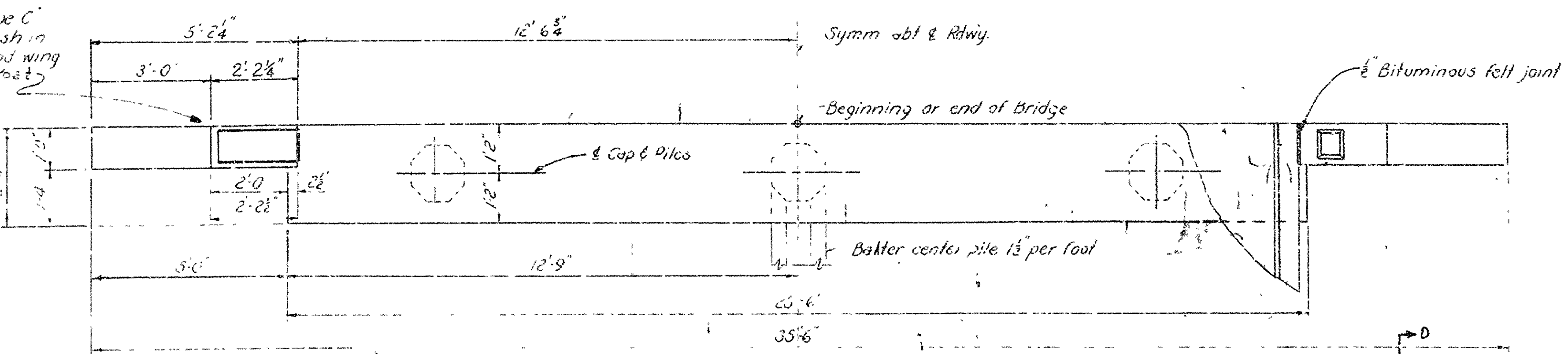
BRIDGE NO. _____

DRAWING NO. 5306

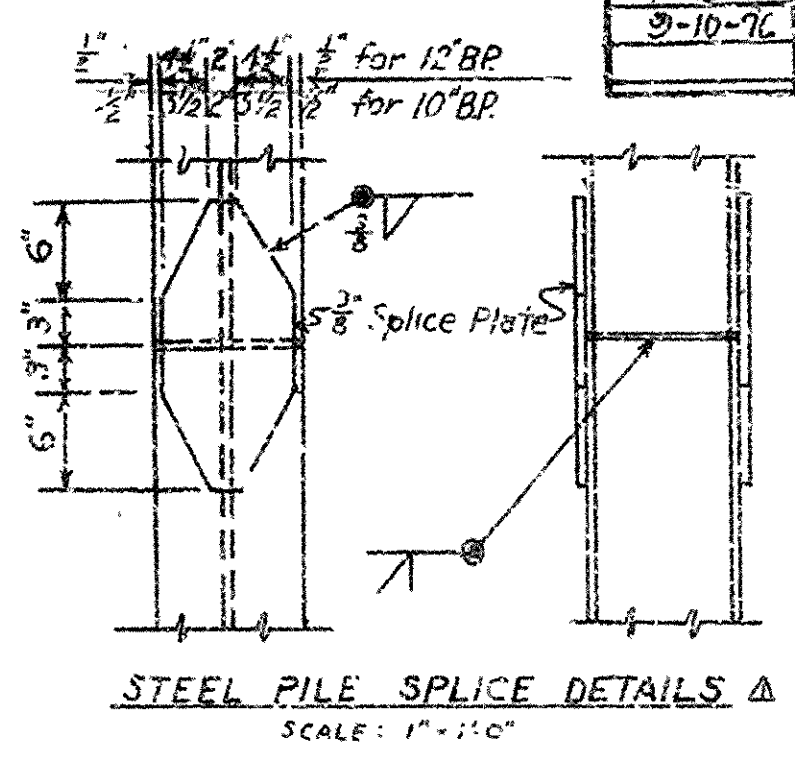
NOTE: Place Type C Name Plate flush in top of right hand wing or on turnout Post

DATE	REVISION	BY	APP'D
7-23-73	6024-1073		
9-10-76	6024-1073		

FILE NO.	STATE	PROJECT NO.	SHEET NO.	TOTAL SHEETS
6	ARK.			
STATE JOB NO.				



PLAN OF END BENT



LIST OF REINFORCING STEEL

Mark	Size	No. Req.	Length
		End Bent	1st Bent
P ₁	#8	3	26'-10"
P ₂	#6	4	25'-0" Str
P ₃	#6	4	23'-3"
P ₄	#4	9	6'-0"
P ₅	#4	38	8'-10"
P ₆	"	12	4'-7"
P ₇	"	4	3'-3"
P ₈	"	4	2'-9"
P ₉	"	4	2'-3"
P ₁₀	"	8	6'-5"
P ₁₁	"	4	6'-3"
P ₁₂	"	4	2'-8"
P ₁₃	"	4	1'-11"
P ₁₄	"	4	5'-2"

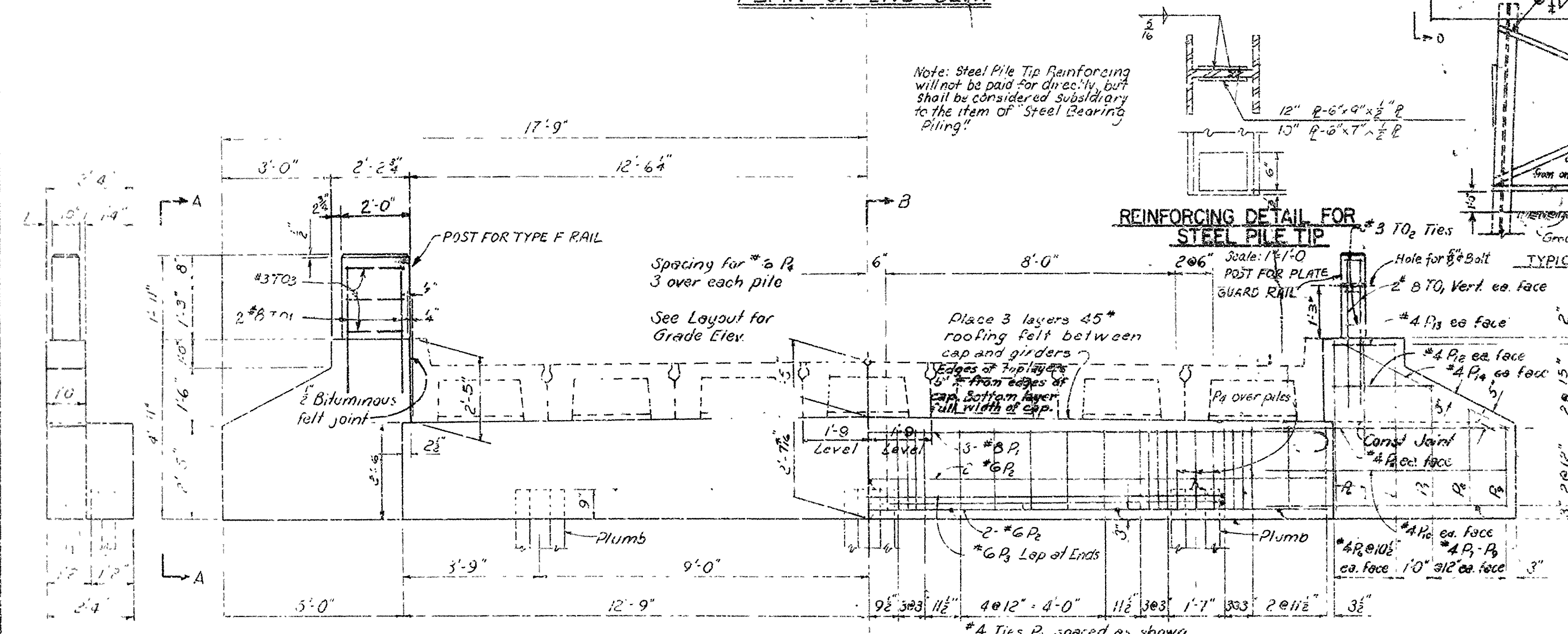
Strain ht

Bending Diagram

Diagram illustrating the bending shapes and dimensions for reinforcement bars P₁ through T₀₃. The dimensions are given in feet and inches (e.g., 8", 6'-0", 25'-0").

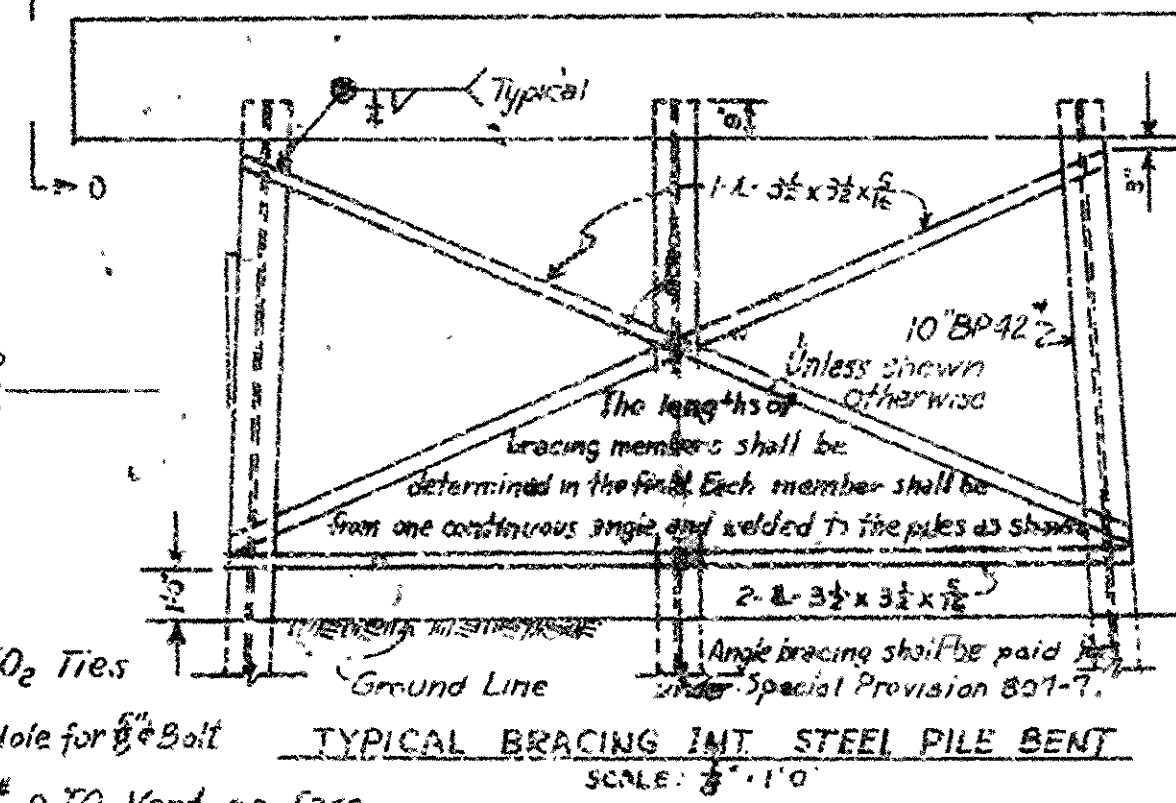
- P₁**: 8" straight length, 6'-0" bent length, 25'-0" total length.
- P₂**: 1'-10" straight length, 3'-3" bent length, 19'-10" total length.
- P₃**: 2'-0" straight length, 2'-0" bent length, 2'-2" total length.
- P₄**: 2'-0" straight length, 2'-0" bent length, 2'-2" total length.
- P₅**: 2'-0" straight length, 2'-0" bent length, 2'-2" total length.
- P₆**: 2'-0" straight length, 2'-0" bent length, 2'-2" total length.
- P₇**: 2'-0" straight length, 2'-0" bent length, 2'-2" total length.
- P₈**: 2'-0" straight length, 2'-0" bent length, 2'-2" total length.
- P₉**: 2'-0" straight length, 2'-0" bent length, 2'-2" total length.
- P₁₀**: 2'-0" straight length, 2'-0" bent length, 2'-2" total length.
- P₁₁**: 2'-0" straight length, 2'-0" bent length, 2'-2" total length.
- P₁₂**: 2'-0" straight length, 2'-0" bent length, 2'-2" total length.
- P₁₃**: 2'-0" straight length, 2'-0" bent length, 2'-2" total length.
- P₁₄**: 2'-0" straight length, 2'-0" bent length, 2'-2" total length.
- P₁₅**: 2'-0" straight length, 2'-0" bent length, 2'-2" total length.
- T₀₁**: 2'-0" straight length, 2'-0" bent length, 2'-2" total length.
- T₀₂**: 2'-0" straight length, 2'-0" bent length, 2'-2" total length.
- T₀₃**: 2'-0" straight length, 2'-0" bent length, 2'-2" total length.

Dimensions are out to out of bars



ELEVATION OF END BENT

REINFORCING DETAIL FOR STEEL PILE TIP

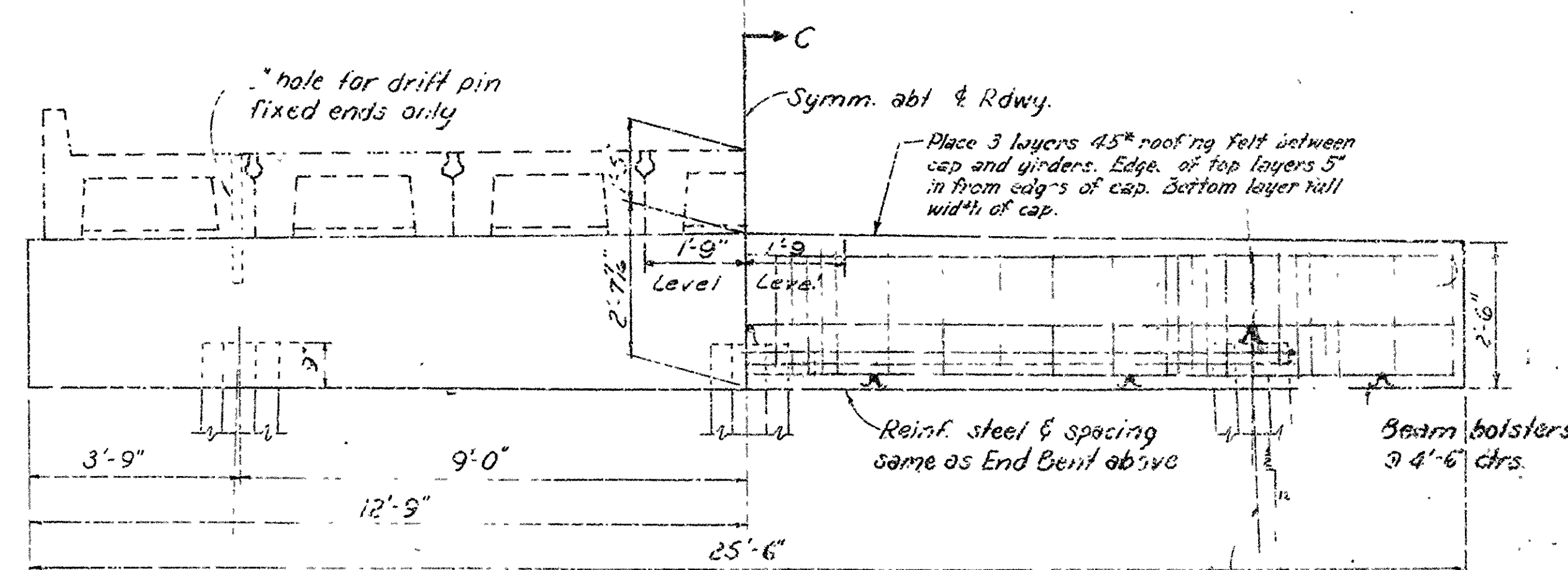


SECTION B-B

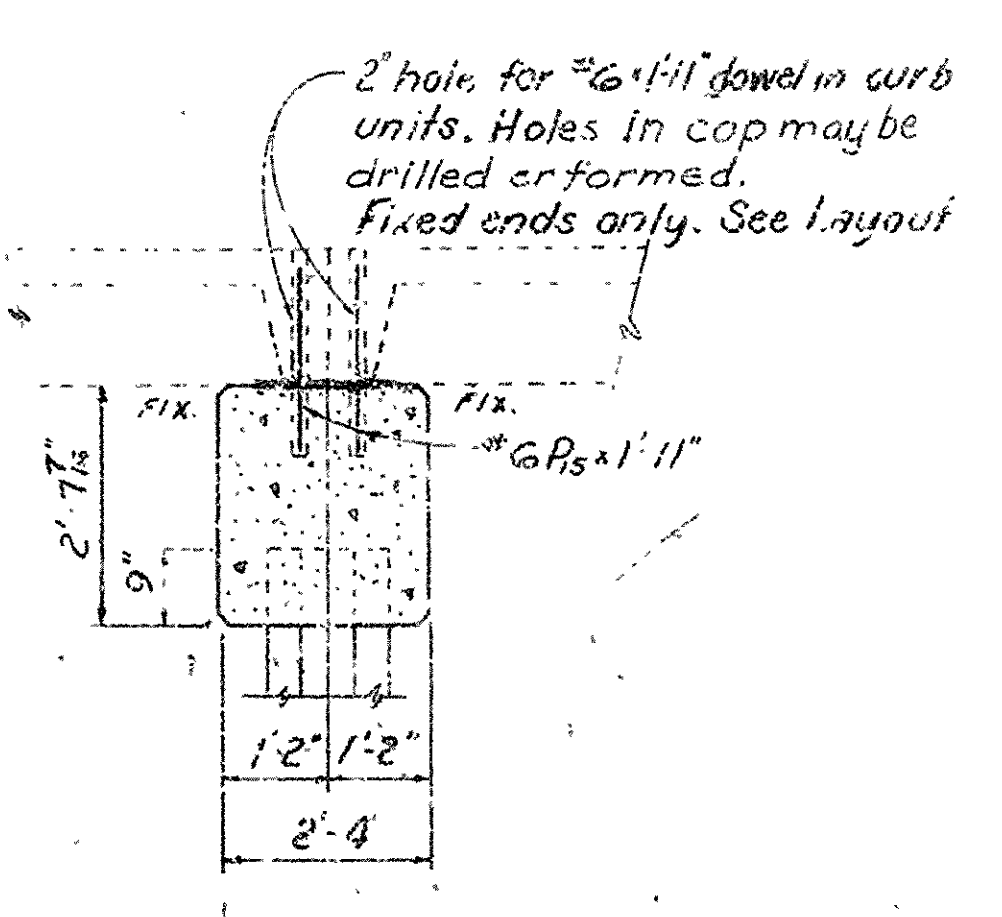
At Fixed Bents only.
T01 required for Plate Guard Rail, T03 required for Type F Rail.

NOTES:
All concrete to be Class S. All exposure corners to be chamfered unless otherwise noted.
For General Notes and Details of slab spans see Dwg. No 5306
Specifications: Arkansas State Highway Commission, "Standard Specifications for Highway Construction", Edition of 1972
Reinforcing steel to be ASTM A615 Grade 40
Shop lists and bending diagrams may be submitted for approval before fabrication is begun.
Steel or Aluminum Plate Guard shall be of the type shown or an equivalent rigid type as approved by the Engineer. The rail, including all posts and fastenings, shall be paid for at the unit price bid per linear foot for "Plate Guard Bridge Rail".

1/4" Sponge rubber compressed to 1" and sealed with asphalt joint filler, not to be paid for directly but considered as subsidiary to Precast Slab Units.



ELEVATION OF INTERMEDIATE BENT



Showing Slab Details (See Dwg. No. 5306 Revised Curb Units)
Revised by J. L. Jones, 1-23-77 L.M.
Added Footing Detail 9-10-76

Joint materials and roofing felt not to be paid for directly but considered subsidiary to Precast Slab Units.

DETAILS OF STANDARD PILE BENTS
FOR 19'-0" R.C. PRECAST SLAB SPANS
24'-0" CL. RDWY. 9" CURBS

ROUTE SEC.
ARKANSAS STATE HIGHWAY COMMISSION
LITTLE ROCK, ARK.
Drawn By: A.S. Date: 3-17-73
Traced By: J.S. Date: 3-17-73
Checked By: J.S. Date: 3-17-73
BRIDGE NO. DRAWING NO. 5306A